

CT 1028 K2/K3/K4, CT 1051 K1/K2

VW, Audi, Seat, Škoda 1.9/2.0 TDI PD

Tensioning pulley breaks off after bolt snaps

Problem:

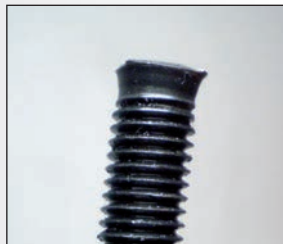
Belt drive failure soon after installation of the kit due to the tensioning pulley breaking off.



Broken-off tensioning pulley

Cause:

The tensioning pulley was unable to gain full supporting purchase on the engine. This resulted in the action of lateral forces on the stud bolt, which subsequently broke.



Stud bolt at transition (M10)

Solution:

The stud bolt must always be inserted as far as it will go into the engine so that the screwed-on contact surface of the tensioning pulley can be fully supported on the cylinder block without any additional loads being generated.

