

## CT 1092 K1 Peugeot, Citroën, Ford, Fiat, Mazda, Mini and Volvo 1.6 Diesel, 9H engines

Idler failure as a result of running surface seizure

### Problem:

The belt drive fails due to the defective idler pulley. Part of the plastic running surface has been worn through.



Worn-through idler

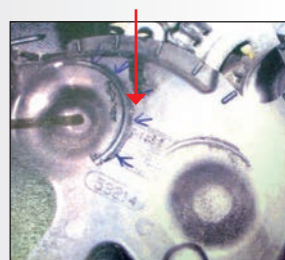
### Cause:

The idler seizes due to inadmissible contact with the cover. The timing belt destroys the idler after a short period because of the belt sliding over it.



### Solution:

Always make sure that the cover of the timing belt drive is positioned correctly and check for any potential distortion due to heat input. Long-term operation can be ensured only when the pulleys can rotate freely.



Timing belt cover